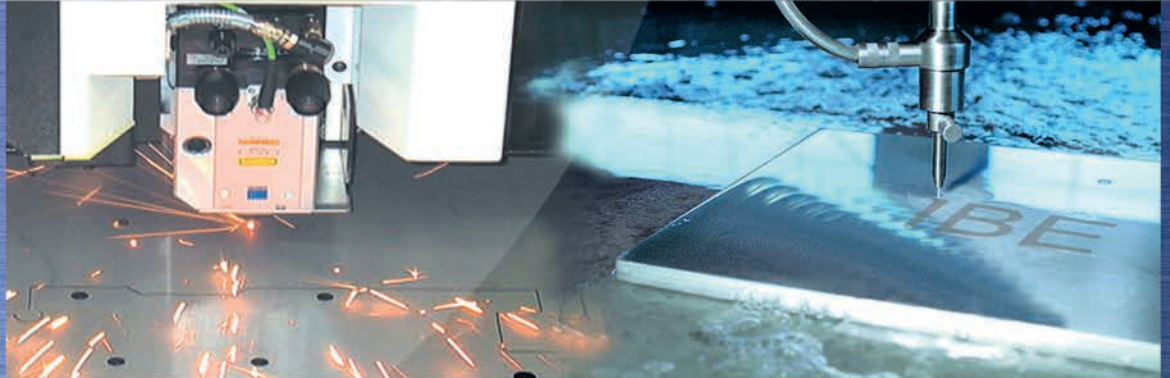


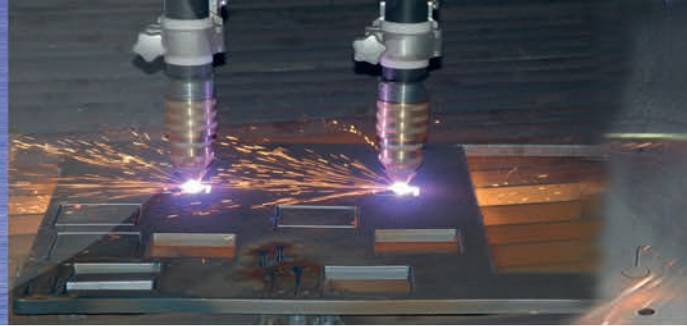
# ncCAD32



**A CAD/CAM solution that lasts!**



The CAD/CAM programming solution for cutting, stamping and combi machines from all manufacturers.



# The Constant in Your Calculations

## Introduction

IBE Software has a history of more than 20 years of success. With our highly motivated and skilled team supporting all your sheet metal industry needs, IBE stands for CAD/CAM solutions that last!

**We** develop integrated software solutions solely for our customers, working independently of any machine manufacturers. We support all cutting technologies including stamping. We are your pre-production advantage!

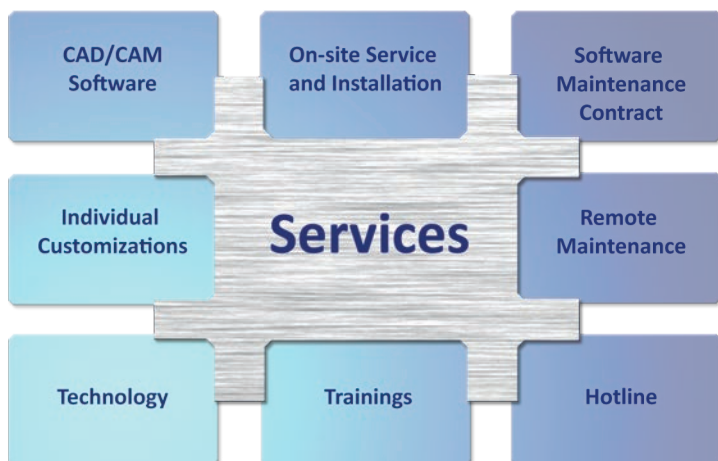
## Our Service For Your Business

**What** use would our software be if no one could really use it? Well-trained employees help to accelerate your internal processes - that's why we offer a comprehensive training and service palette for commissioning and maintaining your database.

## Our Services:

- Training sessions in Wilhelmshaven, on-site at your location, or online by webconference.
- Installation on-site or by remote desktop.
- Exceptional customer service on-site or by remote desktop.
- Maintenance contracts with our hotline.

Find out about our comprehensive product palette for yourself!



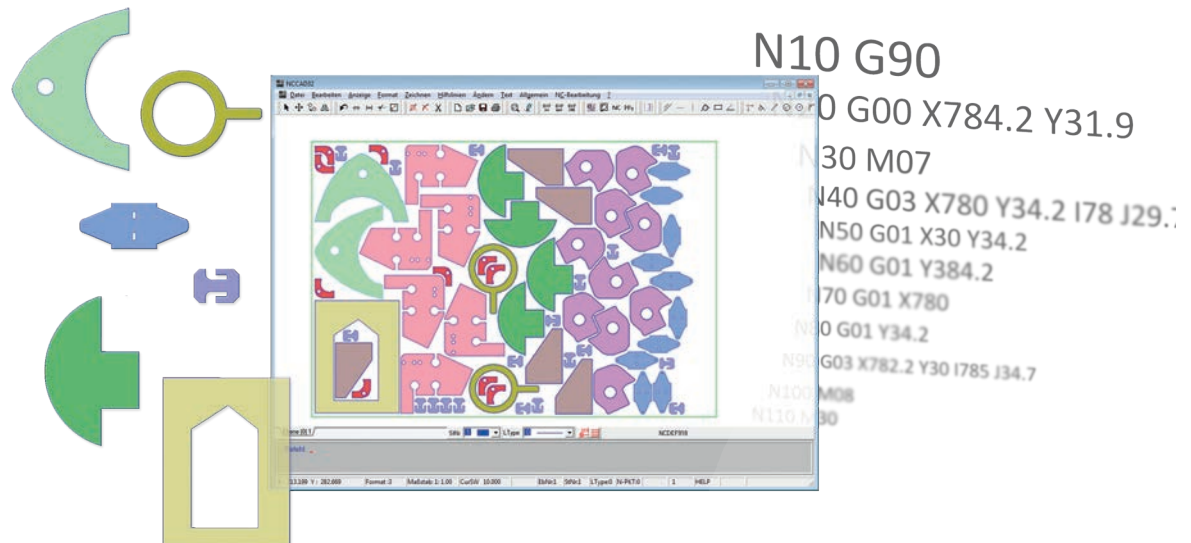


## Your Machinery, Our ncCAD - What A Team!

### What Makes A Great Team?

That's easy to answer: **ncCAD32** gives you an incisive CAD/CAM tool which, in combination with your machine tools, adds up to a great team. Our modules are built not only to work perfectly with each other, but moreover for you.

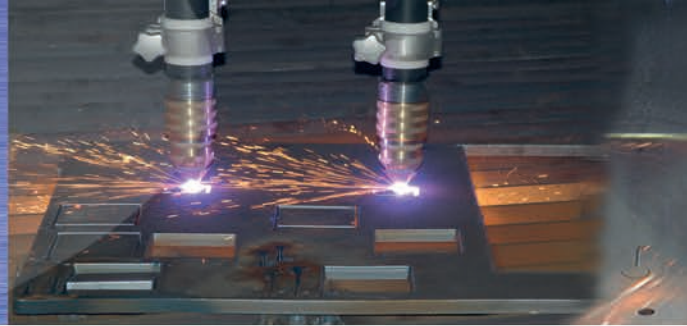
Our software is specialized for a comprehensive selection of sheet metal cutting technologies. We support all cutting methods, stamping, nibbling, and combination cutting machines. Our post-processors are tailored to your needs so that an optimal configuration is found for every user and each machine.



### Your Advantages Summarized:

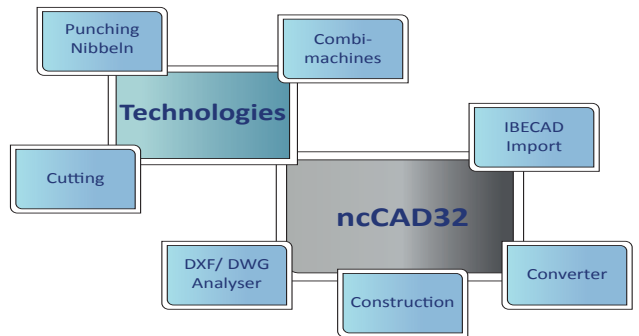
- All in one: all cutting technologies in one program!
- Optimal user customization using tailored post-processors.
- Expandable with SHEET METAL CENTER Plus and other modules.
- Customizable forms.
- Comprehensive lead-in management.
- Create your own 2D CAD drawings.
- Import, clean up and edit existing DXF/DWG files.
- Multiple converters available for importing other file types.
- Customized time calculation using the post-processor.
- Cutting path simulation.





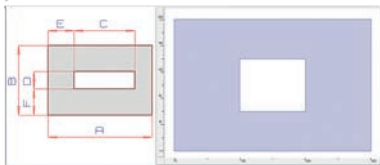
## Professional CAD

In the CAD module you can create geometric drawings with our fully-functioned editor. You also have access to a multitude of programmable macros to help you create your drawings, so even new users can create complex parts in minimal time!



### Your Advantages Summarized:

- Quick and easy part creation.
- Specially created for the sheet metal industry.
- DXF/DWG import filter with error correction.
- User-oriented macro programming.
- Read NC programs back as drawings.
- Extensive macro library.
- Create texts as drawing elements.
- Work with a command line or user-friendly graphic interface.



### Custom Macros:

**ncCAD32** allows users to program their own macros with its integrated macro module. No programming experience? No problem, we will program macros to your specifications as an extra service.

### Readers And Converters:

Our many readers and powerful import function allow you to use varied formats from multiple CAD systems. Our semi-automated clean-up function allows you to clean-up faulty drawings before they reach production.

### Customize ncCAD32:

- Create your own toolbars inc. icons and commands.
- Personalize function key definition.
- Create machine setting forms.

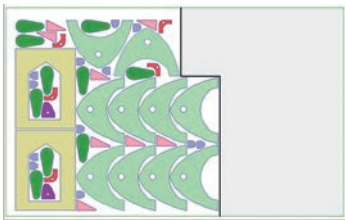


## Professional CAM - ncSchneid

The CAM module offers both automated and manual programming options - you have full flexibility. Automated cutting paths can be created with minimal clicks and edited at any time thereafter. Changes to one workpiece can be copied to another workpiece, or automatically transferred to the nesting plan. Workflow optimization is the priority! You can define, edit and expand material type and thickness specific technology tables for each machine. These tables contain settings for cutting quality, cutting speed, markings, etc.

### Your Advantages Summarized:

- Automated technology creation.
- Material type and thickness specific technology tables.
- Complex time calculations.
- Semi and fully automated multi-torch cutting.
- True-shape and manual nesting.
- Lead-in management (dynamic lead-ins, corner lead-ins, custom lead-ins).
- Looping, beveling and rounding routines.
- Common separating cuts.
- Micro-joints, cutting bridges and chain cuts.
- Beveling for machines with tiltable cutting heads.

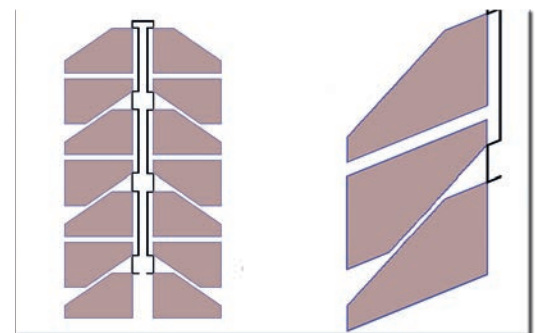


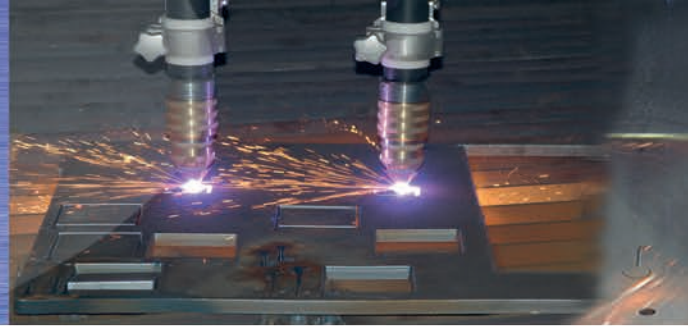
### Remnant Sheets and Offcuts:

- Create offcuts with a few clicks.
- Manual separating cuts and true-shape offcuts.
- Convert nesting plans to offcut grids.
- Offcut labeling.

### Chain Cut:

- Join your lead-ins and lead-outs.
- Process multiple parts with a single cutting path.





## Professional CAM - ncStanz

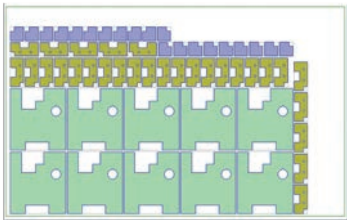
The stamping nodule of **ncCAD32** allows creation of stamping paths with a few clicks, these can be edited any time. Optimization is promoted by an easy to use overview of all stamps. **ncCAD32** utilizes diverse recognition strategies for automated conversion, e.g.:

- Special stamps are automatically considered,
- Stamps previously used on a part contour are recognized and reused,
- Procedure recognition routine for repeating stamping arrangements.

All popular stamping machines, combination machines and disposal strategies are supported.

### Your Advantages Summarized:

- Automated technology data creation inc. special stamps.
- Automated recognition and conversion of part contours.
- Automated procedure recognition for repeating internal contours.
- Automated tool allocation.
- Automated loading and unloading e.g. Sheetmaster.
- Multiple sorting algorithms.
- Separating and triangular stamps as well as multi-tools and Wilson tools.
- Support for all popular disposal strategies (M-stop, micro-joints, slides, etc.).



### Nesting Options:

- Nest one part in a grid.
- Automated nesting of multiple parts in the grid module.
- Automated and manual nesting of multiple parts in true-shape mode.

### Tool Database:

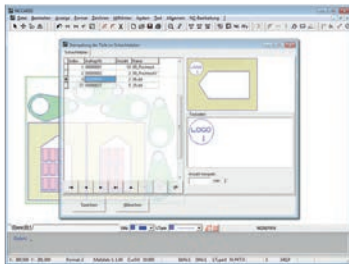
Our comprehensive tool database contains all tools and special stamps. When converting automatically **ncCAD32** uses all tools in the database.



## Version Summary and Expansions

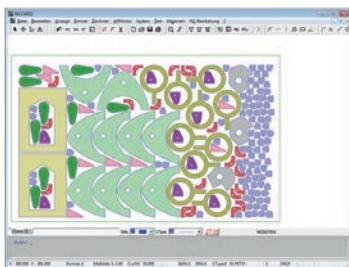
### Expand ncCAD32 Modularly:

Expand the base module with further technologies.



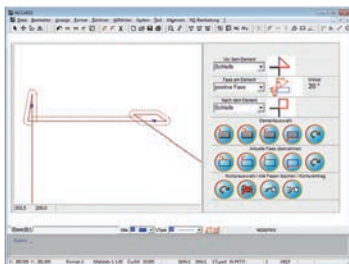
### Markings:

Enable multi-line labeling of your parts and sheets including company logos.



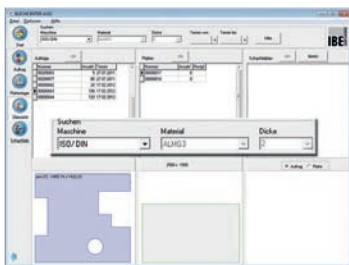
### True-shape and Manual Nesting:

Varied parts can be automatically distributed efficiently on your sheets. The part in part function is always considered. Nesting results can be edited manually at any time.



### Beveled Edges:

The beveling module offers an exceptionally user-friendly solution for working with chamfered edges. This option is available for all machines with tiltable cutting heads.



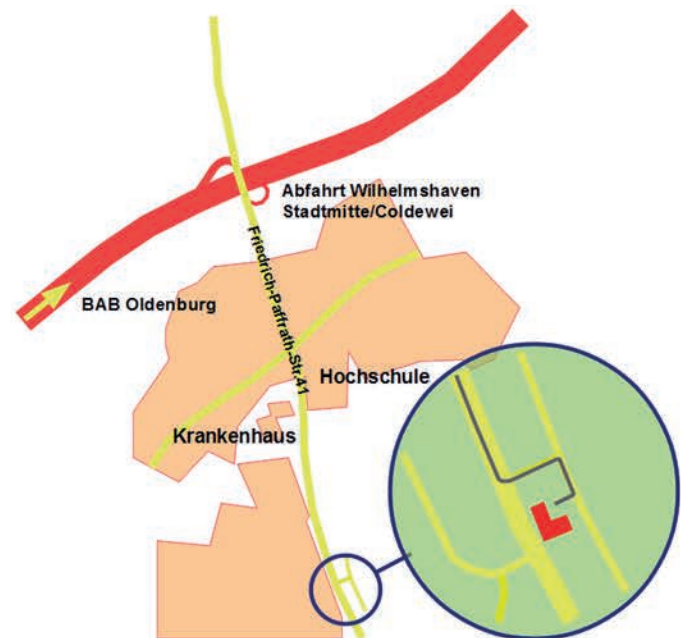
### SHEET METAL CENTER Plus:

A complete software instrument for your whole workflow, including management of materials, customers and jobs. All CAD/CAM technologies for cutting, stamping and combination machines are supported.





## Visit us



### **IBE Software GmbH**

Friedrich-Paffrath-Straße 41  
26389 Wilhelmshaven

Tel.: +49 (0) 4421 - 994357

Fax: +49 (0) 4421 - 994371

[info@ibe-software.de](mailto:info@ibe-software.de)

[www.ibe-software.de](http://www.ibe-software.de)

